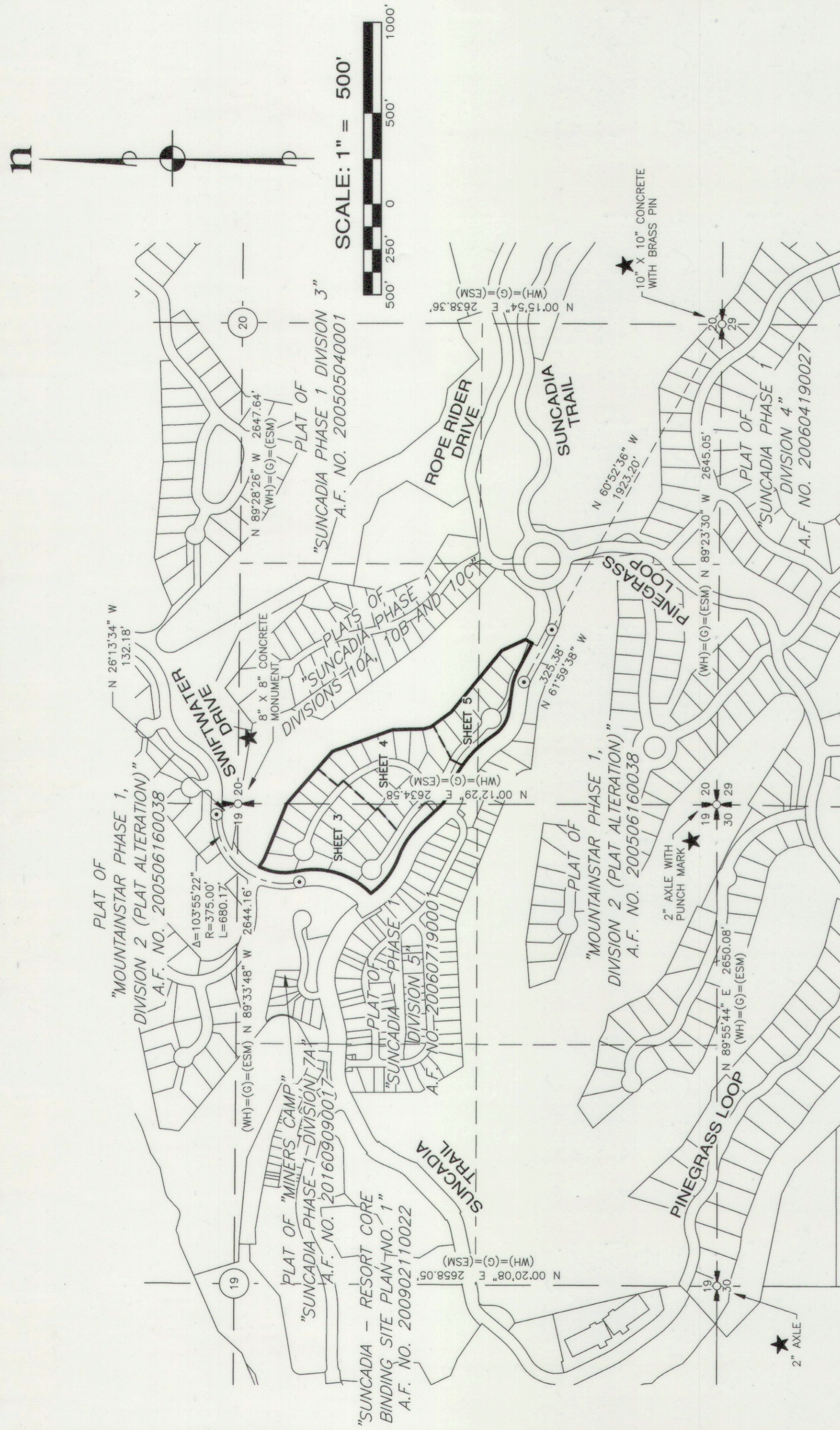


# THE LEGACY AT SUNCADIA SUNCADIA - PHASE 1 DIVISION 6

A PORTION OF SECTIONS 19 AND 20, TOWNSHIP 20 NORTH, RANGE 15 EAST, W.M.  
KITITITAS COUNTY, WASHINGTON

AUDITOR'S REFERENCE



## LEGEND

- (WH) BEARING AND/OR DISTANCE IS BASED UPON THE FIELD LOCATION OF THE FOUND CORNER AND THE COORDINATE POSITION ESTABLISHED BY W&H PACIFIC FOR MOUNTAINSTAR IN 2002.
- (G) BEARING AND/OR DISTANCE FROM THAT RECORD OF SURVEY BY GOLDSMITH & ASSOCIATES AS RECORDED IN BOOK 30 OF SURVEYS, PAGES 104-107, UNDER AUDITOR'S FILE NO. 200407290063.
- (ESM) BEARING AND/OR DISTANCE IS BASED UPON THE FIELD LOCATION OF THE FOUND CORNER AND/OR THE COORDINATE POSITION ESTABLISHED BY W&H PACIFIC FOR MOUNTAINSTAR IN 2002. ESM LOCATED THE EXISTING CORNERS AS SHOWN IN 2003. ESM CONCURRED WITH THE COORDINATE POSITION ESTABLISHED BY W&H PACIFIC AND ACCEPTED THEIR POSITION.
- ★ W&H PACIFIC FIELD LOCATED THE CORNER FOUND AT THIS LOCATION. ESM ACCEPTED THEIR POSITION.
- ⊙ SURFACE BRASS CAP, STAMPED "L.S. 33148" SET IN CONJUNCTION WITH THE PLAT OF "SUNCADIA - PHASE 1 DIVISION 2" (PLAT ALTERATION) A.F. NO. 200506160038

## BASIS OF BEARINGS

WASHINGTON STATE PLANE COORDINATE SYSTEM, SOUTH ZONE, NAD 83/91. PROJECT IS REFERENCED VIA GPS TO NGS CONTROL POINTS "EASTON" (PID SX0662) AND "U358" (PID SX0459). THE DISTANCES SHOWN HEREIN ARE GROUND DISTANCES. TO CONVERT TO GRID DISTANCES, MULTIPLY BY A COMBINED AVERAGE SCALE FACTOR OF 0.999870387.

## SURVEY INSTRUMENTATION

SURVEYING PERFORMED IN CONJUNCTION WITH THIS SURVEY UTILIZED THE FOLLOWING EQUIPMENT AND PROCEDURES:

EQUIPMENT USED: TOPCON GR-5 GNSS EQUIPMENT AND 10" TOTAL STATION MAINTAINED TO MANUFACTURER'S SPECIFICATIONS AS REQUIRED BY WAC-332-130-100

PROCEDURE USED: REAL TIME KINEMATIC OR RAPID STATIC GPS AND FIELD TRAVERSE WITH ACCURACY MEETING OR EXCEEDING THE REQUIREMENTS OF WAC-332-130-090

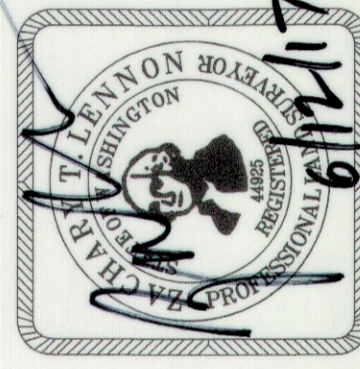
## LEGAL DESCRIPTION

TRACT A OF THAT CERTAIN SURVEY RECORDED APRIL 18, 2017, UNDER AUDITOR'S FILE NO. 201704180025 AND FILED IN BOOK 40 OF SURVEYS, PAGES 210 AND 211, RECORDS OF KITITITAS COUNTY, STATE OF WASHINGTON; BEING TRACT Z-2 AND A PORTION OF TRACT G-6, OF SUNCADIA, PHASE 1 DIVISION 3, IN THE COUNTY OF KITITITAS, STATE OF WASHINGTON, AS PER PLAT THEREOF RECORDED IN BOOK 9 OF PLATS, PAGES 94 THROUGH 120, RECORDS OF KITITITAS COUNTY, WASHINGTON.

## RECORDING CERTIFICATE

FILED FOR RECORD AT THE REQUEST OF KITITITAS COUNTY BOARD OF COMMISSIONERS, THIS \_\_\_\_\_ DAY OF \_\_\_\_\_ A.D., 2017, AT \_\_\_\_\_ MINUTES PAST \_\_\_\_\_ O'CLOCK \_\_\_\_\_ M., AND RECORDED IN VOLUME \_\_\_\_\_ OF PLATS, ON PAGES \_\_\_\_\_, RECORDS OF KITITITAS COUNTY, WASHINGTON.

BY: \_\_\_\_\_ DEPUTY COUNTY AUDITOR  
KITITITAS COUNTY AUDITOR  
AUDITOR'S REFERENCE: \_\_\_\_\_



**ESM** CONSULTING ENGINEERS LLC  
33400 8th Ave. S, #205  
Federal Way, WA 98003  
www.esmcivil.com  
FEDERAL WAY EVERETT (253) 838-6113 (425) 297-9900

Civil Engineering | Land Surveying | Project Management | Land Planning | Landscape Architecture  
DATE: 2017-05-12 JOB NO. 998-753-016-0002  
DRAWN BY: C.A.F./R.F.G. SHEET 2 OF 6